

Variable Angle Solar Mounting Kits

E2L™

P112E



Flat Roof Solar Mounting Kits

The rail-free ballast flat roof mount system is suitable for commercial rooftops, a south-oriented racking solution for mounting framed modules on flat roofs with 5° or 10° mounting tilts. Variable ballast weight allows for local wind rating requirements to be met on individual basis.

Eliminating rails equate to just few boxes per system, without the inconvenience of long, cumbersome rails. The simple and straightforward installation process of the system can save time and reduce labor cost.

Product Description

The Variable Angle Solar Mounting Kit is design to allow the installer to set the angle of inclination of panels between 30 degrees and 45 degrees. Other angles are available on request (10-15 deg and 15-30 deg). The main component of the kit is the triangle as can be seen from Fig.1.

It can be installed on roof clamp or penetrate into concrete base, metal sheet, or using concrete as ballast (Fig.2). Fold-up design allows for easy transportation, cost-effective warehousing and easy mounting.

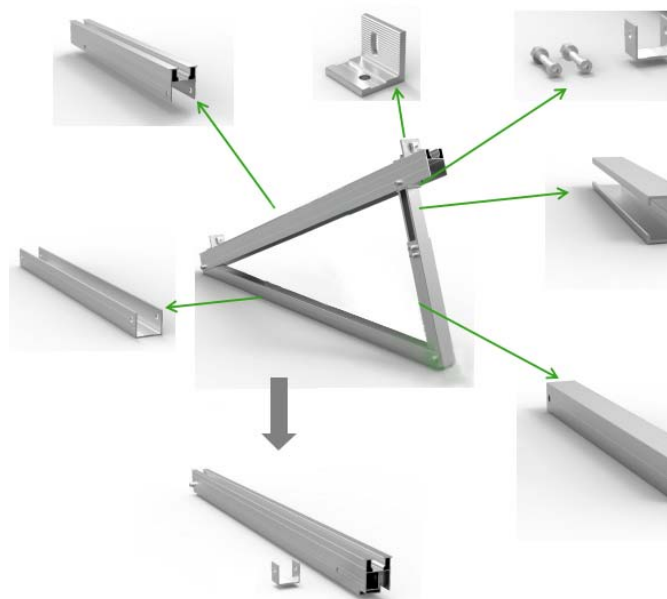
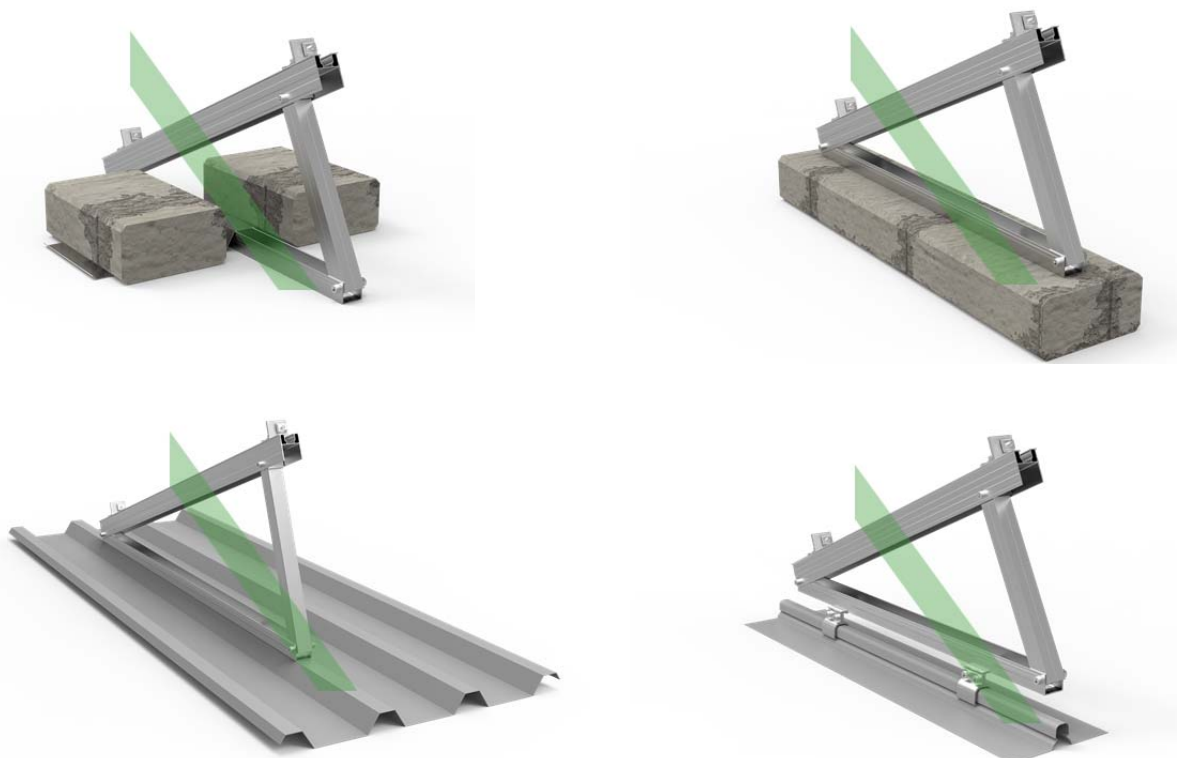


Fig.1: The Adjustable Triangle

Fig.2: Installation options



The Kit

E24 has packaged in kits the complete accessories required for a pre-defined number of panels as per the Ordering Information available by the end of this booklet.

Each kit includes:

- Ballast Trays
 - Triangles
 - L Connectors
 - Rails
 - Mid-Clamps
 - Rail-Joiner (if Needed)
 - End-Clamps
- Screws and expansion anchor bolts are not supplied and must be purchased or not depending on the desired installation option.

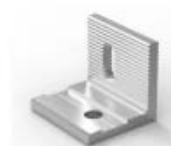
The quantities and rail length is precisely designed to allow the installation of a number of standard solar panels (extra rail length is available for slightly wider panels).



Ballast tray



Triangle bracket



L connector



Rail



Rail joiner



Mid clamp



End clamp

Typical Installation Specifications

Here are some typical installation specifications with ballast or on concrete blocks:

- Adjustable Delta triangle mounting
- Application: Flat roof, open terrain
- Snow load: Up to 100cm
- Wind speed: Up to 80m/s
- Module type: Framed, unframed
- Module orientation: Landscape, portrait
- Material: Anodized aluminum 6005 T5, stainless steel 304, 410
- Standard: AS/NZS1170.2:2011 (R2016), JIS C 8955:2017



Fig.4: Installation on Concrete Blocks

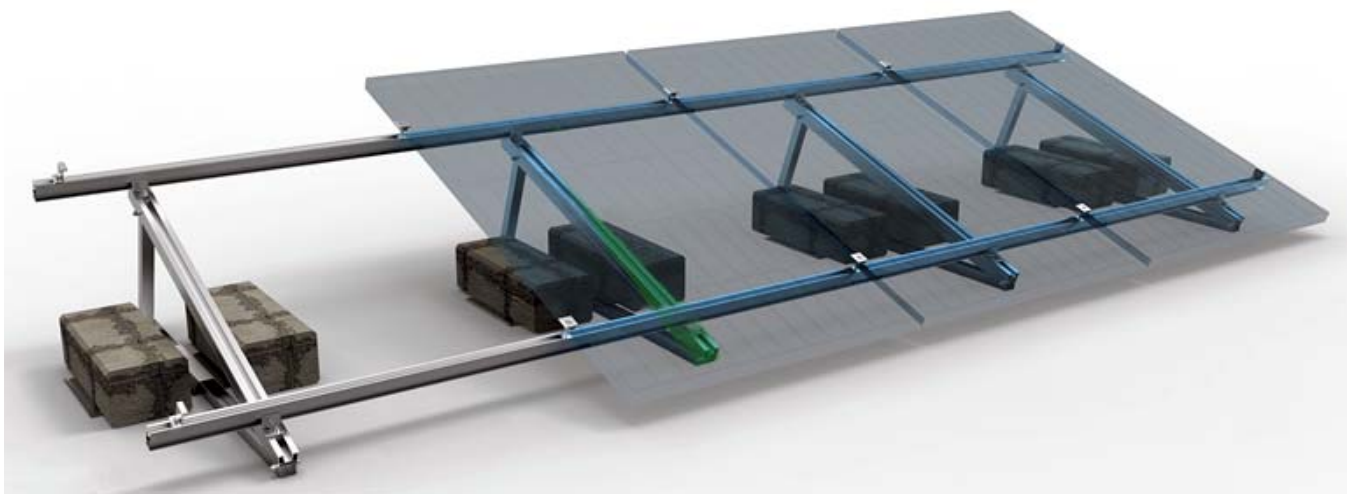


Fig.5: Installation with Concrete Ballast

Ordering Information

Ref Number	Description
PVMK-RVA3	Solar Mounting Structure with Variable Angle for Flat Roof for 3 Panels
PVMK-RVA4	Solar Mounting Structure with Variable Angle for Flat Roof for 4 Panels
PVMK-RVA5	Solar Mounting Structure with Variable Angle for Flat Roof for 5 Panels
PVMK-RVA6	Solar Mounting Structure with Variable Angle for Flat Roof for 6 Panels
PVMK-RVA7	Solar Mounting Structure with Variable Angle for Flat Roof for 7 Panels
PVMK-RVA8	Solar Mounting Structure with Variable Angle for Flat Roof for 8 Panels
PVMK-RVA9	Solar Mounting Structure with Variable Angle for Flat Roof for 9 Panels
PVMK-RVA10	Solar Mounting Structure with Variable Angle for Flat Roof for 10 Panels
PVMK-RVA11	Solar Mounting Structure with Variable Angle for Flat Roof for 11 Panels
PVMK-RVA12	Solar Mounting Structure with Variable Angle for Flat Roof for 12 Panels
PVMK-RVA13	Solar Mounting Structure with Variable Angle for Flat Roof for 13 Panels
PVMK-RVA14	Solar Mounting Structure with Variable Angle for Flat Roof for 14 Panels
PVMK-RVA15	Solar Mounting Structure with Variable Angle for Flat Roof for 15 Panels



www.e24solutions.com

